



Fuel Additives

Penetrants

Engine Degreaser Appearance Products

Differential Additives
Degreasers

Motor Treatment

K&W

Lubricants

Winter Products Power Steering Fluid

Electronic Maintenance
CRC Marine

Brake Maintenance Products

Sta-X

FiberLock

Corrosion Protectants
Boat Care Products

Brakleen

Oil Additives

Sta-Lube

PhaseGuard 4

HydroForce

Greases

Gear Oils

Trans-X

BlockSeal

Transmission Maintenance

Starting Fluid

Diesel Products
Gasket Maintenance

Ethanol Fuel Treatment

Wheel Bearing Grease

Cleaners

Hand Cleaners

Lectra-Motive
Tools

Marykate

Tammy

Equipment
Transmission Fluid

Leak Stoppers

G2P

CRC Diesel

Engine Maintenance www.crcindustries.com

Carburetor Cleaner

Power Steering System Maintenance



product index

1-Tank Power Renew™	25	Ethanol Fuel Treatment	13	Minute Mend™ Epoxy Putty	24,29
2-Cycle Oil	21	Fabric Waterproof	28	Moisture Absorber	29
6-56® Marine Multi-Purpose Lube	26	Fast Motor Flush™ 5-Minute Engine Cleaner	9	Moisture Control Bag	29
Air Brake Anti-Freeze & Conditioner	25	FiberLock® Head Gasket & Block Repair	14	Moly-Graph® Extreme Pressure Grease	18
Air Tool Oil	21	Floor Display	22	MOPAR ATF+3® Transmission Fluid	10
Aluminox™ Pontoon & Aluminum Hull Cleaner	27	Fluid Oil Pump	20,22	Motor Treatment	9, 12,26
Appearance Products	23	For Gas Tanks (Isopropanol)	13,24	Nanotechnology	14
Bar & Chain Lubricant	21	Freeze-Off® Super Penetrant	5,6	Natural Degreaser™	24
Battery Cleaner with Acid Indicator	8	Fuel Additives	12,13	New Generation™ Wheel Bearing Grease	18
Battery Terminal Protector	8,17,24	Fuel Injector Cleaner	13	Nickel Anti-Seize	6
Belt Conditioner	9,17	Fuel Injector Cleaner, Premium	13	Nu-Teak™ One Step Teak Cleaner	29
Big Bully® Bilge Cleaner	27	Fuel Injector Cleaner, Super Turbo™	13	Nu-Teak™ Teak Oil	29
Bilge Cleaner	27	Fuel Stabilizer	13,26	Octane Boost & Lead Substitute	13
Bio-Con™ Sludge Sediment Remover	25	Fuel System Service Kits, DIY	11	On & Off Hull & Bottom Cleaner	27
Block & Head Gasket Repair with Nanotechnology	14	Fuel System Service Kits, Pro	11	Parts Washer Solvent	7
Block Seal & Head Gasket Repair	14	Fuel Therapy® Diesel Additives	25	Penetrants	5
Boat Trailer and 4X4 Grease	18	Gasket Compound	9	PhaseGuard4® Ethanol Fuel Treatment	13,24,26
Brake Maintenance Kit, Professional	5	Gasket Remover	9	PhaseGuard4® Stor & Go® Ethanol Fuel Treatment	13,24
Brake Maintenance Products	2-4, 18	Gear Oils	20	Power Lube® Multi-Purpose Lubricant	6
Brakleen® Brake Parts Cleaner	2-4	General Purpose Lithium Grease	18	Power Steering Fluid	15
Bright Zinc-It® High Shine Instant Cold Galvanize	17	GL-4 Multi-Purpose Gear Oils	20	Professional Brake Maintenance Kit	5
Bulb & Connector Grease	8	GL-5* PLUS New Generation™ Gear Oils	20	Pumice Hand Cleaner with Lemon Scent	19
C.V. Joint Grease	5	Glass & Dash Multi-Use Cleaner	23	Pump Sprayer	22
C.V. Joint Grease	18	Grease	18	QD® Electronic Cleaner	8
Caliper Grease	4, 18	Grease Away Engine Degreaser	27	Quick Flow™ Emergency Fuel-Gel Relief	15
Carburetor Cleaner	7, 10	Grease Gun	22	Radiator Anti-Rust & Water Pump Lubricant	15
Clean-R-Carb™ Carburetor Cleaner	7, 10	Guaranteed To Pass® Emissions Test Formula	12	Radiator Flush	15
Cleaning Detail® Non-Skid Deck Cleaner	27	Hand Cleaners	19	Radiator Rapid Flush, 7 Minute	15
Clear Vinyl Cleaner & Polish	28	Heads Up™ Liquid Holding Tank Deodorant	28	Radiator Stop Leak, Heavy Duty	15
Cold Flow™ Diesel Fuel Anti-Gel with Lubricity	22	Heavy Duty Corrosion Inhibitor	26	Red Grease #2	5, 18
Commercial Pump Sprayer	22	Heavy Duty Drum Brake Grease	5, 18	Roll Away™ Boat Wash	27
Complete Fuel System Cleaner	13	Heavy Duty Silicone™ Lubricant	5	RTV Cartridge Gun	22
Compressor Oil	21	Hi-Temp Disc Brake Wheel Bearing Grease	5, 18	RTV Silicone Adhesive & Sealant	24
Cooling System Maintenance Products	15	Highlight™ Spray Wax	29	Rubberized Undercoating	17
Copper Anti-Seize	6	Honing & Cutting Oil	21	Rust Converter	17
Copper Block Weld™ Block & Radiator Sealer	15	Hull & Bottom Cleaner	27	Salt Terminator®	7, 17
Copper-Coat® High Temp Gasket Compound	9	Hydraulic & Jack Oil	21	Salt Terminator® Mixer Unit	22
Crystal Lakes™ Hull & Bottom Cleaner	27	HydroForce® Cleaners	23	Screwloose® Super Penetrant	6
Cutting Oils & Shop Supplies	21	Hypoid 90 Lower Unit Gear Lube	20,26	Silaramic® Brake System Grease	4, 18
De-Squeak™ Brake Conditioning Treatment	4	Ice-Off® Spray De-Icer	24	Silicone Lubricant	5
Di-Electric Grease	8	Inflatables, Tubes & Towables Cleaner	28	Smoke Stop™ Engine Smoke Reducer	9
Diesel & Heavy Truck Maintenance Products	25	Inner Slide Lube	6,24	Soluble Oil	21
Diesel 1-Tank Power Renew™	25	Insect Control	29	Spray Away™ All Purpose Cleaner	27
Diesel Additives	25	Instant Black Streak Remover	28	Sprayer	22
Diesel Dry™ Diesel Fuel Water Remover	25	Instant Cold Galvanize™	17	Sta-Plex™ Extreme Pressure Premium Red Grease	5, 18
Diesel Fuel Injector Cleaner	25	Instant Cooling System Stop Leak with Nanotechnology	14	Starting Fluid	10,24
Diesel Fuel Injector Cleaner with Anti-Gel	25	Jump Start® Starting Fluid with Lubricity	10,24	Steer-Aid™ Power Steering Conditioner & Leak Stop	15
Disc Brake Quiet	4	Knock'er Loose® Technician Grade Penetrant	6	Steer-X™ Power Steering Stop Leak	15
Display	22	Lanolin Cream Hand Cleaner	19	Stor & Go® Ethanol Fuel Treatment	13,24
Dri-Kleen™ Foaming Waterless Handcleaner	19	Lectra-Motive® Electric Parts Cleaner	7, 8	Stor-X® Fuel Stabilizer	13,24
Dry Lube with PTFE	26	Liquid Rollers® Trailer Bunk Boards Lubricant	28	Super Suds™ Boat Soap	27
Duster™ Moisture-Free Dust & Lint Remover	8, 23	Lithium Grease	18	Super Turbo™ Fuel Injector Cleaner	13
Electronic Cleaner	8	Long Handle Dipping Basket	22	Super White™ Multi-Purpose Grease	18
Engine Assembly Lube & Anti-Seize	9	Lubricants	5	Sure Shot® Reusable Sprayer	22
Engine Degreaser	7	Magic Oil™ Lock Lube & De-Icer	24	SYN-GO® Multi-Grade Full Synthetic Gear Oils	21
Engine Degreaser, Citrus	7	Marine & Boat Trailer Wheel Bearing Grease	5, 18	Synthetic Brake & Caliper Grease	4, 18
Engine Degreaser, Gel	7	Marine Cleaner & Degreaser	26	Synthetic Gear Oil	21
Engine Gasket Sealer	9	Marine Cleaner Wax	29	Tannery® Leather Cleaner/Conditioner	23
Engine Oil Stop Leak	9	Marine Degreaser	26	Throttle Body & Air Intake Cleaner	7, 10
Engine Stor® Fogging Oil	26	Marine Products	26	Throttle Body/Mass Air Twinpack	7, 10
Engine Tune-Up & Decarbonizer	26	Mass Air Flow Sensor Cleaner	7, 8, 10	Tools & Equipment	22
Engincool™ Engine Cooling System	15	Mass Air/Throttle Body Twinpack	7, 10	Trans-X® High Mileage Auto Trans Treatment	16
Enginseal™ Engine Gasket Sealer	9	Maxi Wax™ One Step Cleaner Wax	29	Trans-X® Posi-Trac® Limited Slip Gear Oil Additive	21
Equa-Torque® Limited Slip Friction Modifier	21	Mechanix Orange™ Citrus Hand Cleaner with Pumice	19	Trans-X® Slip-Stop & Leak Fix	16
Equipment & Tools	22	Mildew Stain Remover	28	Trans-X® Slip-Stop & Leak Fix for Trucks	16, 25





Global Headquarters
Warminster, PA USA



Then CRC began in a Pennsylvania garage in 1958 as “Corrosion Reaction Consultants” with a single product: CRC Corrosion Inhibitor, a multi-purpose lubricant.

Now Today, CRC is a global supplier of chemical specialty products, manufacturing over 1,300 items and developing specialized formulas to meet the unique needs of the Automotive, Marine, Heavy Duty, Hardware, Electrical, Industrial and Aviation markets. CRC serves customers around the world with manufacturing and distribution throughout Europe, Central and South America and Asia-Pacific marketing areas. CRC operates 14 facilities that produce more than 70 million cans of aerosol products each year.

Committed to Quality CRC is proud to be ISO (International Organization for Standardization) certified since 1996. The benefits of achieving and maintaining ISO 9001:2008 certification reach our customers through the consistent conformity of our products and services, assuring superior quality, environmental responsibility, safety and reliability. The Result: Products you can depend on from a company who has earned your trust.



Split Decision?

There's a CRC Brākleen® that's just right for Your job.



CRC BRAKLEEN Brake Parts Cleaner

Non-Flammable

The Strongest BRAKLEEN
Formula Available

#1 Choice of Professionals
and Do-It-Yourselfers

VOC Compliant

Fast Cleaning

Quick Evaporation

Leaves No Residue

Contains No CFCs Which
Deplete the Ozone Layer

19 Oz Fill



CRC BRAKLEEN Non-Chlorinated Brake Parts Cleaner

Offered in 4 Formulations
to Meet EPA and
State Regulations

Contains NO
Chlorinated Solvents

Superior Cleaning
Performance

Lower Waste Oil
Recycling Costs

Quick Dry Time

Leaves No Residue

Contains No CFCs Which
Deplete the Ozone Layer



Making Brake Service Better.



Scan this code with your smartphone or visit www.crcbrakleen.com for more information on CRC BRAKLEEN Brake Parts Cleaner and which formula is right for you or your business.

brake system maintenance

CRC



Brakleen® Non-Flammable Brake Parts Cleaner

The original BRAKLEEN – our strongest formula! Chlorinated formula quickly removes brake dust, brake fluid, grease and other contaminants from all types of brake systems including ABS. Cleans fast and dries faster!

05089	19 oz.	12/cs
05089T	19 oz.	12/cs
05090	1 gallon	4/cs
05091	5 gallon	1
05093	55 gallon	1

CRC



Brakleen® Non-Chlorinated Brake Parts Cleaner▲ 50-State Formula with Power Jet™ Technology

The strongest 50-state formula available. Power Jet™ technology provides a more powerful spray which blasts away brake dust, brake fluid, grease and oil while using less product and taking less time to clean.

05050	14 oz.	12/cs
05051	1 gallon	4/cs
05052	5 gallon	1
05053	55 gallon	1
05054	14 oz.	12/cs

CRC



Brakleen® Non-Chlorinated Brake Parts Cleaner▲

Use where compliance calls for a chlorine-free product.

05088	14 oz.	12/cs
05085	1 gallon	4/cs
05087	55 gallon	1
05186	5 gallon	1

CRC



Brakleen® Non-Chlorinated Low VOC Brake Parts Cleaner▲

Use where compliance calls for a low VOC and chlorine-free product.

05084	14 oz.	12/cs
05086	5 gallon	1

CRC



Brakleen® Non-Chlorinated Ultra Low VOC Brake Parts Cleaner▲

Formulated for SCAQMD Rule 1171 (South Coast California).

05151	14 oz.	12/cs
-------	--------	-------



SCAN WITH
SMARTPHONE
TO WATCH
THE VIDEO



Questions about product compliance? Visit www.crcindustries.com or call 800-307-8971 for the most current product compliance info by state. As one of the world's leading manufacturers of chemical maintenance products, CRC has made a commitment to provide the best solutions for our customers. We can help you meet the challenges of today's highly regulated environment. CRC diligently monitors all regulatory developments regarding VOCs, chlorinated solvents, and other important issues affecting our products and our customers.

▲This product is very flammable. Do not apply while equipment is energized.

brake system maintenance



Silaramic® Brake System Grease

Protects all moving caliper hardware, mating surfaces and backing plates with the latest rust, oxidation and anti-wear additives to provide lasting protection against friction, wear and corrosion. Ideal for high performance or racing applications.

05361 5 oz. 12/cs



Disc Brake Quiet

Forms a water resistant, high temperature film that instantly absorbs vibrations and quiets disc brake noise. For use on the back of non-shimmed disc pads.

05016 4 fl. oz. tube 12/cs
05017▲ 9 oz. aerosol 12/cs
05115 .5 fl. oz. carded 12/cs



De-Squeak™ Brake Conditioning Treatment ▲

Spray on rotors and drums on every brake job to eliminate and prevent brake noise. Metallic formula fills grooves in friction surfaces for smoother braking.

05070 2 oz. 6/cs
05080 11.25 oz. 6/cs



Synthetic Brake & Caliper Grease

Synthetic grease prevents caliper binding, vibration and corrosion. Contains molybdenum, PTFE and graphite for an extreme temperature range of -40°F to 500°F. Use on every brake job!

05351 2.5 oz. tube in display 6/cs
05352 1/3 oz. carded packets 12/cs
05353 12 oz. tub 12/cs
05354 2.5 oz. carded tube 12/cs
05359 8 fl. oz. bottle 6/cs
SL3301 2.5 oz. tube in display 6/cs
SL3302 1/3 oz. carded packets 12/cs
SL3303 12 oz. tub 12/cs
SL33011 2.5 oz. carded tube 12/cs



APPLICATION GUIDE

Lubricate all metal-to-metal contact points. Long-lasting grease will not freeze, melt or wash out, like silicone-based greases. For high performance or racing applications, choose Silaramic® Brake System Grease

Synthetic Brake & Caliper Grease or Silaramic®

Clean and lubricate all shoe landings. This will ensure smooth operation of the shoes. Lubricate all parking brake hardware and shoe adjusters to prevent binding & corrosion.

Select the appropriate grease based on usage:
daily driver, late-model spec,
high performance or 4-wheel drive.

Wheel Bearing Grease

To prevent corrosion build-up, lubricate the underside of the rotor hat or the hub facia.

Synthetic Brake & Caliper Grease or Silaramic®

De-Squeak™ Brake Conditioning Treatment

Apply on new, freshly turned or existing friction surfaces. De-Squeak™ fills in imperfections that will affect the coefficient of friction.

Wheel Bearing Grease

Clean and repack bearings with every brake job. Do not mix different grease bases.

Synthetic Brake & Caliper Grease or Silaramic®

Synthetic Brake & Caliper Grease

Lubricate backs of all shimmed disc pads. This will prevent corrosion and brake noise.

Disc Brake Quiet

Use on all non-shimmed disc pads.

Freeze-Off® Super Penetrant

Super penetrant breaks through corrosion, gums and varnishes.

Bräkleen®

Thoroughly clean brakes BEFORE disassembly. This will allow for proper inspection.

▲ This product is very flammable. Do not apply while equipment is energized.

brake system maintenance



Sta-Plex™ Extreme Pressure Premium Red Grease

A superior multi-purpose certified lithium complex based NLGI #2 grease. Contains extreme pressure, anti-wear, and anti-oxidation additives. Ideal for high temperature and performance applications. Drop point: 500°F.

SL3190	14 oz. cartridge	10/cs
SL3191	14 oz. can	12/cs
SL3195	35 lb. pail	1
SL3197	120 lb. keg	1



Red Grease #2

Smooth, tacky, red lithium complex grease fortified with rust and oxidation inhibitors. Good water resistance, won't wash out. Great for sliding surfaces and open gears and for lubricating moving parts in mowers, reapers, water pumps, electric motors, ball and roller bearings, assembly plants, and truck applications.

SL3400	14 oz. cartridge	10/cs
--------	------------------	-------



Marine Grease Boat Trailer and 4X4 Grease

Excellent water resistance. NLGI-2 aluminum complex base. Great for 4WD and boat trailer wheel bearings. Drop point: 500°F.

SL3120	14 oz. cartridge	10/cs
SL3121	14 oz. can	14/cs
SL3125	35 lb. pail	1
SL3127	120 lb. keg	1
SL3184	3 oz./3 per card	6/cs



Heavy-Duty Drum Brake Wheel Bearing Grease

For drum brakes and slow speed bearings. NLGI-2 sodium base. Ideal for use where heavy loads and slow speeds are prevalent.

Drop point: 360°F.

SL3131	14 oz. can	12/cs
SL3135	35 lb. pail	1
SL3136	7 lb. tub	1



Hi-Temp Disc Brake Wheel Bearing Grease

For high temperature, high speed bearings. NLGI-2 aluminum complex base. For use on disc brake systems, chassis points and suspension systems. Drop point: 500°F.

SL3160	14 oz. cartridge	10/cs
SL3161	14 oz. can	12/cs
SL3165	35 lb. pail	1
SL3166	7 lb. pail	4/cs



Professional Brake Maintenance Kit▲

Kit contains specialized products engineered to clean and protect specific brake system components for maximized performance: Brakleen® with Power Jet™, De-Squeak™, Synthetic Brake & Caliper Grease, Disc Brake Quiet plus FREE Technician Gloves.

05099	kit	2/cs
-------	-----	------



C.V. (Constant Velocity) Joint Grease

Protects against rust and oxidation with extreme pressure additives designed to sustain the shock loads encountered in CV joints.

SL3174	4 oz. carded tube	12/cs
SL3174B	4 oz. tube	36 pcs



Freeze-Off® Super Penetrant ▲

Immediately drops the temperature of the area in direct contact with the spray. The freezing effect cracks rusted surfaces, allowing the lubricating solvent to penetrate faster and work more effectively than other penetrant products. Low VOC formula.

05002	11.5 oz.	12/cs
-------	----------	-------

▲This product is very flammable. Do not apply while equipment is energized.

Product Development & Quality Control

CRC has 17 chemists and technicians working to develop the best formulas with superior product performance. We use only the finest raw materials, and our Quality Control team tests each component to ensure they meet specifications.



Regulatory

CRC constantly monitors the federal, state and regional regulations that affect our products and our customers' marketplace. Our regulatory department works directly with legislators to ensure regulations are scientifically sound and commercially viable.



lubricants & penetrants



Freeze-Off® Super Penetrant ▲

Immediately drops the temperature of the area in direct contact with the spray. The freezing effect cracks rusted surfaces, allowing the lubricating solvent to penetrate faster and work more effectively than other penetrant products. Low VOC formula.

05002 11.5 oz. 12/cs



Heavy Duty Silicone™ Lubricant ▲

Clear, non-staining film lubricates metal, rubber, nylon and wood to eliminate squeaks and binding caused by friction. Water resistant film perfect for applications exposed to the elements. Low VOC formula.

05074 7.5 oz. 12/cs
05174 11 oz. 12/cs



Power Lube® Multi-Purpose Lubricant

All-in-one product quickly cleans, penetrates, lubricates, and protects against corrosion. Stops squeals and loosens rusted parts. Clings to surface to deliver long lasting lubrication with less mess. Displaces moisture. Pleasant scent.

05005 9 oz. 12/cs
05006 11 oz. 12/cs
05007 1 gallon 4/cs
05009 5 gallon 1 pail
05011 55 gallon 1 drum



Ultra Screwloose® Super Penetrant ▲

Super-fast, powerful, concentrated penetrating solvent. Attacks and penetrates tough rust, gum and corrosion on contact to free corroded fasteners and mechanical components.

05330 11 oz. 12/cs



Inner Slide Lube

Lubricates and increases slide motion, extending forklift equipment life in automotive, heavy duty, farm, industrial, marine and shop applications. Fortified with molybdenum disulfide and extreme pressure additives to resist pound-out and prevent destructive metal-to-metal contact. Designed for forklift inner slide rails.

05305 10 oz. 12/cs



White Lithium Grease ▲

A high purity, NLGI Grade 2 white lithium grease. Excellent water and heat resistance for use in any weather or temperature. Makes surfaces friction resistant and protects against corrosion. Ideal for metal to metal applications. Will not break down or run out.

05037 10 oz. 12/cs



Knock'er Loose® Technician Grade Lubricant / Penetrant

Concentrated heavy-duty formula penetrates rust and corrosion. Leaves behind a long-lasting, fine film lubricant to protect against future corrosion.

401712 9 oz. 12/cs
401724 18 oz. 12/cs



Copper Anti-Seize

General purpose anti-seize lubricant that prevents seizing caused by high temperature, heavy loads, vibrations and corrosion. Effective up to 1800°F. Available in brush-top cap or aerosol.

14095▲ 12 oz. aerosol 12/cs
SL35901 8 oz. 12/cs
SL35903 16 oz. 12/cs



Nickel Anti-Seize

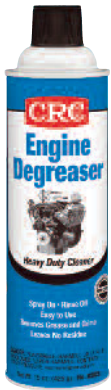
Nickel-based formula that is free of copper, lead, sulfides and chlorides. This premium quality lubricant has extremely high temperature and excellent chemical resistance. Effective up to 2400°F. Available in brush-top cap or aerosol.

SL35911 8 oz. 12/cs
SL35913 16 oz. 12/cs



▲This product is very flammable. Do not apply while equipment is energized.

cleaners & degreasers



CRC

Engine Degreaser

Quickly dissolves and lifts off oil, grease and road grime from engines for cooler, more efficient running. Easy to use: spray on and rinse off. Leaves no residue.

05025 15 oz. 12/cs



CRC

Engine Degreaser Gel Formula

Penetrates and removes the most stubborn baked on engine greases and road grimes. Unique formula clings to all surfaces longer and penetrates deeper than conventional engine degreasers. Low VOC formula.

05026 15 oz. 12/cs



CRC

Engine Degreaser Citrus Formula

Powerful citrus cleaning formula dissolves and lifts off the toughest grease and road grime. Low VOC formula.

05027 15 oz. 12/cs



CRC

Clean-R-Carb™ Carburetor Cleaner ▲

Instantly dissolves deposits on venturi, linkages, butterflies and PCV systems to improve fuel system performance and enhance fuel economy. Harmless to catalytic converters and oxygen sensors.

05079 12 oz. 12/cs
05081 16 oz. 12/cs

50-State Formula. Meets ALL state and federal VOC regulations.

05379 12 oz. 12/cs
05381 16 oz. 12/cs



KW

Technician Grade Carburetor & Choke Cleaner ▲

Shop size, professional strength cleaner designed to maximize carburetor performance. Quickly dissolves carburetor deposits such as gum, sludge and varnish to improve fuel system performance and enhance fuel economy.

401924 19 oz. 12/cs



CRC

Lectra-Motive® Electric Parts Cleaner

Aggressive cleaner specifically for electric motors, alternators, solenoids, starters, electric tools and machinery. Non-flammable formula dissolves grease, oil, dirt and wax that may cause electrical failure. Evaporates quickly leaving no residue behind. Do not use to clean plastic or sensitive electronic components, use 05103 QD® Electronic Cleaner instead.

05018 19 oz. 12/cs



CRC

Mass Air Flow Sensor Cleaner ▲

The original MAF sensor cleaner. Safely cleans and protects MAF sensors. Dyno proven to increase horsepower and improve air/fuel ratio. Reduces rough idle, hesitation and ping. Improves fuel mileage. Plastic safe, leaves no residue.

05110 11 oz. 12/cs
05610 4.5 oz. 12/cs



CRC

Throttle Body & Air-Intake Cleaner ▲

Cleans air-intakes, throttle valves, throttle bodies and linkages on fuel-injected gasoline engines (both throttle body and multi-port). Safe for use on coated throttle bodies. Low VOC formula.

05078 12 oz. 12/cs
05678 5 oz. 12/cs



CRC

Mass Air / Throttle Body Twinpack ▲

The right size for the job! Twinpack contains single-use sizes of both Mass Air Flow Sensor Cleaner and Throttle Body & Air-Intake Cleaner.

05111 1 - 4.5 oz. 6/cs
1 - 5 oz.



CRC

TYME® 1 Carburetor & Cold Parts Cleaner

Two-phase, water-rinsable, cold tank liquid parts cleaner.

Quickly removes carbon, varnish, and grease from aluminum and other metals. Non-corrosive, non-flammable.

14101 1 gallon 4/cs
14104 5 gallon 1



CRC

Parts Washer Solvent

Cleaning solvent for metal parts, most plastics, and painted surfaces. Instantly removes grease, oil, dirt, and other contaminants.

05067 5 gallon 1 pail



CRC

Salt Terminator® Engine Flush, Cleaner & Corrosion Inhibitor

Cleans and protects anything exposed to salt (saltwater, salt air, road salt). Dissolves salt and leaves a protective coating to inhibit corrosion.

SX22 22 fl. oz. 12/cs
SX32 32 fl. oz. 7/cs
SX32M 32 fl. oz. w/ mixer 6/cs
SX128 1 gallon 6/cs
SX55 55 gallon 1
SXM XR mixer only 12/cs

▲ This product is very flammable. Do not apply while equipment is energized.

electrical maintenance



CRC

Battery Cleaner with Acid Indicator

Yellow foaming cleaner instantly detects acid leaks and turns pink upon acid contact. Neutralizes acid and effectively cleans terminals, connectors, cases and hold downs. Penetrates and removes corrosion allowing for maximum current flow.

05023 11 oz. 12/cs



CRC

Battery Terminal Protector ▲

Lead-free, long-lasting red film coating. Protects battery terminals, cables and bulkhead connectors from corrosion, a leading cause of hard starting and battery failure.

05046 7.5 oz. 12/cs



CRC

Lectra-Motive® Electric Parts Cleaner

Aggressive cleaner specifically for electric motors, alternators, solenoids, starters, electric tools and machinery. Non-flammable formula dissolves grease, oil, dirt and wax that may cause electrical failure. Evaporates quickly leaving no residue behind. Do not use to clean plastic or sensitive electronic components, use 05103 QD® Electronic Cleaner instead.

05018 19 oz. 12/cs
05019 1 gallon 4/cs
05024 55 gallon 1



CRC

QD® Electronic Cleaner Quick Dry Cleaner ▲

Instantly penetrates hard-to-reach areas to safely dissolve dirt and debris from sensitive electronic components. Cleans contacts, connectors and sensitive electronic equipment. Helps prevent contact failure. Quick drying, plastic safe formula leaves no residue.

05103 11 oz. 12/cs



CRC

Mass Air Flow Sensor Cleaner ▲

The original MAF sensor cleaner. Safely cleans and protects MAF sensors. Dyno proven to increase horsepower and improve air/fuel ratio. Reduces rough idle, hesitation and pinging. Improves fuel mileage. Plastic safe, leaves no residue.

05110 11 oz. 12/cs
05610 4.5 oz. 12/cs



CRC

Technician Grade Di-Electric Grease

Seals, protects and insulates electrical contacts and bulbs. Prevents corrosion by repelling moisture, dirt and oils that can penetrate and harm electrical connections. Precision Tip Applicator applies a thin stream of grease directly on the work area. Improves electrical performance by reducing arcing and voltage drop.

05109 .5 oz. 12/cs



CRC

Technician Grade Di-Electric Grease/Bulb & Connector Grease

Seals, protects and insulates. Maintains optimum electrical connections in extreme conditions. Patented delivery system is great for hard-to-reach places.

05105 3.3 oz. can 12/cs
05107 .28 oz. card 12/cs



CRC

Wire Dryer

Starts wet engines and instantly drives out moisture that can cause electrical failure and hard starting. Cleans and weatherproofs all electrical system parts. Waterproof film leaves a fine protective coating on ignition and electrical systems. Reduces wear and ensures proper electrical current flow.

05104 6 oz. 12/cs



CRC

VisiClear™ Display Cleaner & Electronic Screen Cleaner

Streak-free foam cleaner clings, won't drip, and is alcohol and ammonia free. Will not damage screen protective coatings. Use on plasma/LCD displays, touch-screens, computers, cell phones and PDAs, GPS screens and CRT monitors. Leaves no residue and dries fast.

05131 6.9 oz. 12/cs



CRC

Duster™ Moisture-Free Dust & Lint Remover

Quickly and safely blasts away dirt, dust, lint and other contaminants from any surface. Ideal for sensitive electronics. Penetrates hard-to-reach cracks and crevices that normal hand-dusting cannot reach.

05185 8 oz. 12/cs



▲This product is very flammable. Do not apply while equipment is energized.



Motor Treatment

Cleans gum, varnish and carbon from the fuel system, injectors, pistons, and combustion chamber. Removes moisture from fuel and oil systems and lubricates engine components. For use in gasoline, diesel, ethanol and oil. Pour into fuel system, induce directly into combustion chamber via main manifold vacuum line and add to crankcase.

05316 16 fl. oz. 12/cs



Valve-Kleen™ Engine Valve & Lifter Cleaner

Dissolves sludge, gum and varnish on valves, lifters and oil passages and prevents new deposits from forming.

05331 12 fl. oz. 12/cs



Enginseal™ Engine Gasket Sealer

Helps stop oil leaks in gaskets, oil and main bearing seals. Restores elasticity and compensates for shrinkage of seals. Improves seal-to-metal contact.

05339 12 fl. oz. 12/cs



Top Engine Cleaner

Cleans intake system, valves and combustion chamber for improved engine performance. Increases MPG, restores power and reduces emissions. Solves many rough-idle problems. Spray into throttle body. To prevent future carbon build-up and improve engine efficiency, use every 5,000 miles.

05312 12 oz. 12/cs



Smoke Stop™ Engine Smoke Reducer

Reduces excessive exhaust smoke and oil burning caused by worn engine parts. Maintains optimum viscosity index for all engine temperatures.

05334 12 fl. oz. 12/cs



Fast Motor Flush™ 5-Minute Engine Cleaner

Use before oil change to remove power-robbing sludge, gum, rust and varnishes.

05336 30 fl. oz. 12/cs



Engine Oil Stop Leak

Stops engine oil leaks by rejuvenating worn or aged engine seals and gaskets. Ideal for all motor oils, gasoline or diesel engines in cars, trucks, boats or tractors.

402715 15 fl. oz. 12/cs



Belt Conditioner ▲

Eliminates noise and extends belt life. For use on all types of belts, such as serpentine, flat and v-type belts. Prevents slippage and glazing. Removes oil, grease and glaze. Use every 3,000 miles to prevent drying out and slippage.

05350 7.5 oz. 12/cs



Extreme Pressure Engine Assembly Lube and Anti-Seize

Prevents friction, galling and wear on all types of engine components during assembly, start-up and break-in periods.

SL3331 10 oz. tube 6/cs
SL3333 2.75 oz. carded tube 12/cs



Technician Grade Gasket Remover ▲

Fast-acting formula. Quickly removes gasket cement, sealers and paint. Eliminates excessive scraping and cleaning.

05021 12 oz. 12/cs



Copper-Coat® High Temp Gasket Compound

Goes on tacky to hold gaskets firmly in place. Contains copper for long-lasting and high temperature applications.

401504 4 oz. dauber 12/cs
401612 ▲ 9 oz. aerosol 12/cs



▲ This product is very flammable. Do not apply while equipment is energized.

fuel system maintenance

A Clean Mass Air Flow Sensor Restores Lost MPG and Horsepower

The MAF sensor constantly measures the amount and density of the air entering the engine so the computer knows how much gasoline to inject into each cylinder. Located after the air filter and ahead of the throttle body, the MAF sensor works by holding the operating temperature of a heated wire (hotwire) or flat film element at a constant temperature.

A vehicle's computer depends on extremely accurate measurements from the MAF sensor to help calculate everything from the amount of fuel needed to run the engine efficiently (without excessive emissions) to transmission shift points and ignition timing.

If the hotwire is dirty, it will be insulated and slow the communication between the MAF sensor and the computer, a situation that can directly cause drivability issues, excessive emissions and poor fuel economy resulting in fewer MPG than the vehicle is meant to reach.

Mass air flow sensors can get dirty in a number of ways. Pollen, dust particles and soot can build up and burn onto on the hotwire of the mass air flow sensor causing incorrect measurements of air flow and density. This can lead to hesitation, sputtering, hard starting, stalling, excess emissions and power loss.

Oil can also build up on the hotwire, caused by excessive blow-by from internal engine wear or, more often, where an aftermarket air filter that requires oil is fitted to the vehicle. Sometimes a consumer will over oil these air filters and the oil will travel directly from the filter onto the MAF sensor leading to malfunction.

Recognizing the need for a product to safely clean fragile mass air flow sensors, CRC developed CRC Mass Air Flow Sensor Cleaner – the FIRST cleaner specifically designed for the MAF sensor. DO NOT use carburetor or brake parts cleaners to clean MAF sensors. Aggressive chemicals can degrade the plastic housing and sensitive electronics of the MAF sensor leading to malfunction.

The CRC plastic-safe formula is extremely effective and proven to renew MPG and up to 10 horsepower with dynamometer proven results.



CRC Throttle Body & Air-Intake Cleaner ▲

Cleans air-intakes, throttle valves, throttle bodies and linkages on fuel-injected gasoline engines (both throttle body and multi-port). Safe for use on coated throttle bodies. Low VOC formula.

05078	12 oz.	12/cs
05678	5 oz.	12/cs



CRC Mass Air Flow Sensor Cleaner ▲

The original MAF sensor cleaner. Safely cleans and protects MAF sensors. Dyno proven to increase horsepower and improve air/fuel ratio. Reduces rough idle, hesitation and pinging. Improves fuel mileage. Plastic safe, leaves no residue.

05110	11 oz.	12/cs
05610	4.5 oz.	12/cs



CRC Mass Air / Throttle Body Twinpack ▲

The right size for the job! Twinpack contains single-use sizes of both Mass Air Flow Sensor Cleaner and Throttle Body & Air-Intake Cleaner.

05111	1 - 4.5 oz.	6/cs
	1 - 5 oz.	



CRC Clean-R-Carb™ Carburetor Cleaner ▲

Instantly dissolves deposits on venturi, linkages, butterflies and PCV systems to improve fuel system performance and enhance fuel economy. Harmless to catalytic converters and oxygen sensors.

05079	12 oz.	12/cs
05081	16 oz.	12/cs

50-State Formula. Meets ALL state and federal VOC regulations.

05379	12 oz.	12/cs
05381	16 oz.	12/cs



CRC Jump Start® Starting Fluid with Lubricity ▲

Improves cold or humid starts on gasoline or diesel engines. Effective to -65°F.

05671	11 oz.	12/cs
-------	--------	-------



CRC TYME® 1 Carburetor & Cold Parts Cleaner

Two-phase, water-rinsable, cold tank liquid parts cleaner. Quickly removes carbon, varnish, and grease from aluminum and other metals. Non-corrosive, non-flammable.

14101	1 gallon	4/cs
14104	5 gallon	1

▲This product is very flammable. Do not apply while equipment is energized.

FOR DIYS



2-Step Complete Fuel Injection & Oil System Service Kit

STEP 1: 05076 Complete Fuel System & Combustion Chamber Cleaner
STEP 2: 05331 Valve-Kleen™ Oil Treatment/Engine Valve & Lifter Cleaner

- Improves fuel economy
- Removes power-robbing gums, varnishes and deposits
- Reduces hesitation, knock and rough idle
- Frees sticky valves and rings
- Formulated with advanced Guaranteed To Pass® technology to lower exhaust emissions and clean up emission control components
- Cleans combustion chambers and intake valves for easier starts, faster acceleration and increased air flow
- Cleans engine valves and lifters and prevents new deposit formation
- Quiets noisy operation

05127 service kit 6/cs

FOR PROS



2-Step Fuel Injection & Induction System Service Kit

STEP 1: 05061 Fuel Injector Cleaner
STEP 2: 05076 Complete Fuel System & Combustion Chamber Cleaner

- Improves fuel economy
- Removes power-robbing gums, varnishes and deposits
- Reduces hesitation, knock and rough idle
- Frees sticky valves and rings
- Formulated with advanced Guaranteed To Pass® technology to lower exhaust emissions and clean up emission control components
- Cleans combustion chambers and intake valves for easier starts, faster acceleration and increased air flow
- Eliminates the need for high-octane fuel

05124 service kit 6/cs

FOR DIYS



4-Step Complete Fuel System Tune-Up Kit with Engine Treatment

STEP 1: 05076 Complete Fuel System & Combustion Chamber Cleaner
STEP 2: 05331 Valve-Kleen™ Oil Treatment/Engine Valve & Lifter Cleaner
STEP 3: 05678 Throttle Body & Air Intake Cleaner▲
STEP 4: 05610 Mass Air Flow Sensor Cleaner▲

Provides the same total fuel system clean-up of the 2-step kit with these added benefits:

- Cleans sensitive mass air flow sensors
- Cleans gum and varnish from the throttle valves and throttle body
- Dramatically improves fuel economy, performance and air/fuel ratio
- Increases horsepower

05129 service kit 6/cs

FOR PROS



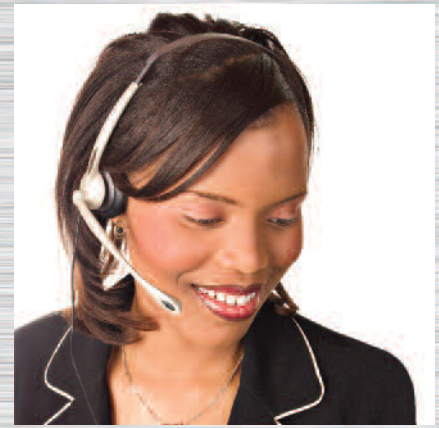
3-Step Fuel Injection & Induction System Service Kit + Oil Treatment

STEP 1: 05061 Fuel Injector Cleaner
STEP 2: 05076 Complete Fuel System & Combustion Chamber Cleaner
STEP 3: 05331 Valve-Kleen™ Oil Treatment/Engine Valve & Lifter Cleaner

Provides the same total fuel system clean-up of the 2-step kit with the added benefit of an oil treatment

- Conditions the oil delivery system
- Cleans engine valves and lifters and prevents new deposit formation
- Quiets noisy operation

05125 service kit 6/cs



Customer Service & Technical Support

13 dedicated customer service reps provide 100% live help, prompt order turnaround and a proven 99.8% order accuracy rate. Automated EDI processing enables the expediting and tracking of orders from our door to yours. Our toll-free technical support line handles more than 11,000 calls per year to answer questions about the usage and safe handling of CRC products.



Sales & Marketing

Our team of experts has more than 250 years of combined experience to support your business and help you enhance your customer relationships.

▲This product is very flammable. Do not apply while equipment is energized.

Production

Our U.S. manufacturing facility is located at our headquarters in Warminster, Pennsylvania. CRC houses state-of-the-art high-speed aerosol lines and multiple liquid filling lines for precise and efficient mass production. As an ISO-9001:2008 certified manufacturer, CRC places strict controls on every step of our product development and manufacturing process to ensure consistent, quality manufacturing techniques.



Shipping & Warehouse

Our shipping warehouse features barcode scanning of all finished goods inventory and orders, contributing to our exceptional 99.4% order shipment accuracy. Our experienced personnel will pick, wrap and ship your orders in less than 72 hours. CRC shipping procedures comply with all DOT, IMCO and IATA regulations.



Motor Treatment Internal Engine & Crankcase Cleaner



SCAN WITH
SMARTPHONE
TO WATCH
THE VIDEO



MULTI-TASKING ADDITIVE FOR GAS, DIESEL, OIL AND ETHANOL

CRC Motor Treatment cleans and lubricates internal fuel and oil systems for a smoother running engine, increased MPG, restored power and reduced emissions.

ADD TO FUEL: CRC Motor Treatment cleans fuel injectors, carburetor jets, intake valves and pistons as you drive. Lubricates upper cylinders, cures hesitation and pings, restores power and pick-up, removes moisture and stabilizes fuel. Use for engine storage. Works in gasoline, diesel and ethanol fuels. For a more aggressive cleaning, may be added directly into the combustion chamber through a vacuum line.

SYN-GO® Lubricates upper cylinders for added protection against the drying effect of ethanol in fuels.

ADD TO OIL: Over time, prolonged idle, stop and go driving, dirt, moisture and extreme operating temperatures can cause sludge build-up in motor oil resulting in power and performance loss. CRC Motor Treatment liquefies built-up gum and varnish and releases carbon deposits cleaning sticky valve lifters, piston rings and PCV systems slowly, while you drive, to prevent chunks of sludge from clogging oil flow. Removes moisture from oil.

Use on: • cars • trucks • boats
• motorcycles • dirt bikes • RVs
• lawn equipment • agricultural equipment • ATVs • rotary engines

05316 16 fl. oz. 12/cs

Top Engine Cleaner Engine Tune-Up & Carbon Clean-Out



COMBUSTION CHAMBER AND INDUCTION SYSTEM CLEANER

Problem: Engine knock (detonation), pre-ignition stalling, rough-idle, reduced engine performance, loss of power and excessive carbon build-up

Solution: CRC Top Engine Cleaner

Carbon can collect on built-up gum and varnish residue in your engine and can also harden on intake valves, piston heads, cylinder walls and injectors. Carbon deposits left untreated in the engine are potentially a serious problem, leading to reduced engine performance, increased fuel consumption, rough idling and engine knocking, pinging or run-on.

Top Engine Cleaner cleans the intake system, valves and combustion chamber for improved engine performance. It solves many rough-idle problems, increases MPG, restores power and reduces emissions.

For optimum results, changing the oil and oil filter after running a top end cleaner through the engine is recommended.

To prevent future carbon build-up and improve engine efficiency, use CRC Top Engine Cleaner every 5,000 miles.

05312 12 oz. 12/cs





Complete Fuel System & Combustion Chamber Cleaner with Guaranteed To Pass® Technology

Complete cleaning of fuel system components including combustion chamber. Restores power, performance and MPG. Recommended use every 5,000 miles. G2P® technology lowers exhaust emissions and cleans up emission control components.

05076 12 fl. oz. 12/cs



PhaseGuard4® Stor & Go® Ethanol Fuel Treatment for Small Engines

Small engine formula provides the maximum protection available to prevent harmful phase separation of fuel that can lead to equipment failure. Protects against corrosion, cleans fuel system components, stabilizes fuel and restores power. 1 fl oz packet treats up to 2.5 gallons in-use or for storage. Stabilizes fuel for 24+ months.

05068 50 - 1 fl. oz. packets 4/cs in a display box



Fuel Injector & Carburetor Cleaner

Cleans dirty fuel injectors and carburetors. With regular use, eliminates hard starts, rough idling, dieseling, engine run-on, knocks, pings and excessive emissions.

05061 12 fl. oz. 12/cs



Premium Fuel Injector Cleaner

Meets BMW fuel injector cleaning specifications. Prevents rust and corrosion. Reduces the need for high octane fuels.

05062 12 fl. oz. 12/cs



Octane Boost & Lead Substitute

Increases horse-power and torque while adding lubricity to the fuel system. Protects against valve recession. Decreases NOx and carbon monoxide emissions.

05077 12 fl. oz. 12/cs



For Gas Tanks Water Remover (Isopropanol Formula)

Removes water from gasoline and protects fuel to -50°F. Inhibits rust in fuel tank and prevents fuel line freezing. Assures quicker starting and faster pick-up. Recommended use: 3-4 times a year.

05343 12 fl. oz. 12/cs



Stor-X® Fuel Stabilizer

Super-concentrated formula keeps fuel fresh up to one year. Stabilizes fuel by inhibiting varnish, peroxide and gum development in gasoline and diesel fuel during storage.

402815 8 fl. oz. 12/cs



Super Turbo™ Fuel Injector Cleaner

Increases power and acceleration, cleans fuel injectors, improves fuel economy and reduces knocking. Disperses water. Reduces harmful emissions.

402111 12 fl. oz.



Guaranteed To Pass® Emissions Test Formula & Complete Fuel System Cleaner



GUARANTEED TO PASS® REDUCES EMISSIONS AND IMPROVES PERFORMANCE IN ONE TANKFUL

Pass your emissions test or double your money back! CRC Guaranteed to Pass® removes harmful gums and varnish from carburetor and emission control components. Reduces CO, HC and NOx emissions to guarantee a passing emissions test and reduces the need for expensive high octane fuel. Super-cleans fuel injectors, intake valves and combustion chamber to increase MPG, promote easier starts, faster acceleration and better airflow. Maximum allowable cleaning chemistry for superior results. Use year-round as a fuel system cleaner for optimum performance. Recommended every 3,000 miles. Works with all gasoline and ethanol-blended fuels.

05063 12 fl. oz. 12/cs

BEFORE G2P® / AFTER G2P® INTAKE VALVE:



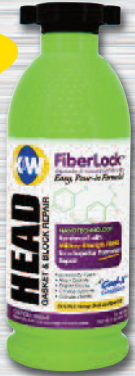
PISTON/COMBUSTION CHAMBER



head gasket & block repair

FiberLock® Head Gasket & Block Repair Pour & Go Formula

POUR & GO!



Permanently repairs cracks in head gaskets, engine blocks, intake gaskets, cylinder heads, heater cores, freeze plugs and radiators – THE ULTIMATE SOLUTION for all coolant leaks!

401224-6 32 fl. oz. 6/cs

FIBERLOCK provides DIYers and installers with an alternative to performing time-consuming and costly repairs. Compatible with ALL types of antifreeze and attacks leaks using three unique technologies:

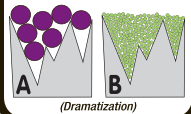
MILITARY-STRENGTH FIBERS

Proprietary lightweight fibers with a high strength-to-weight ratio make an interlocking web-like weave over the breach, ensuring a permanent, multi-layer, impenetrable repair.

NANO-TECHNOLOGY

A = A typical block repair product attempting to adhere to a metal surface, but the particles are too large leaving room for leaks.

B = K&W® FIBERLOCK™ with nanoparticles making a stronger more solid bond to the metal and its own particles.



(Dramatization)

COOL-X™ CONDITIONER

COOL-X™ Conditioner circulates in the cooling system for lower operating temperatures and improved heat transfer long after the repair is made.

Military-Strength Fibers

FIBERLOCK contains sodium silicate reinforced with military-strength proprietary fibers with a high strength-to-weight ratio to make an interlocking web-like weave over the crack or breach ensuring a PERMANENT, multi-layer, impenetrable repair.

Nanotechnology

FIBERLOCK features nanoparticles so small they reach into cracks and crevices other products can't. This makes the molecular bond of the repair stronger and more solid when permanently hardened to the surface area.

Cool-X™ Conditioner

Cool-X™ circulates in the cooling system for lower operating temperatures and

improved heat transfer long after the repair is made.

Permanent Head Gasket & Block Repair with Nanotechnology



Permanent repair for head gaskets, radiator and heater core leaks, cracked engine blocks and cylinder heads. Cures in 1/2 the time of leading brands. Advanced nanoparticles allow product to fill voids that a typical head gasket repair product can't. Double your money back guarantee!

401232 32 fl. oz. 12/cs

Nanotechnology: Why It Works Better

Nanotechnology deals with objects or particles that are measured in nanometers which are one billionth the size of a meter. These particles are so small that thousands of them could fit into the width of the period at the end of this sentence.

DRAMATIZATION: A microscopic look at a metal's "flat" surface shows that it actually contains peaks and valleys that are invisible to the human eye.

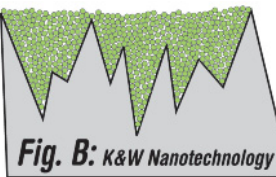
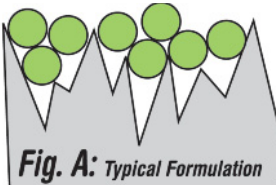


FIGURE A portrays a typical head gasket repair product attempting to adhere to the metal surface, but the large particles cannot completely fill the cracks between the peaks and valleys.

FIGURE B portrays K&W® NANOTECHNOLOGY Permanent Head Gasket & Block Repair making a stronger, more solid connection with the metal surface and between its own particles.



Instant Cooling System Stop Leak w/ Nanotechnology

Instant Pour-n-Go results. Add directly to coolant to seal leaks in cylinder heads, gaskets, blocks and throughout the cooling system. Nanotechnology allows product to fill cracks and voids for a strong, solid bond. Works great as an emergency cooling system repair, allowing users enough time to get home or to an auto repair shop.

401210 11 fl. oz. 12/cs

Permanent Metallic™ Block Seal Head Gasket Repair



A cost-effective alternative to an expensive head gasket repair. K&W Permanent Metallic™ Block Seal permanently repairs cracked radiators, blocks, heater cores and head gaskets (the cause of most overheating problems), with a molecular seal as strong as steel. Professional grade formula seals coolant leaks without leaving product in your cooling system. May be used in both gasoline and diesel vehicles for a permanent fix that withstands the extreme pressures and temperature of the cooling system.

401016 16 fl. oz. 12/cs



WARNING SIGNS INDICATING A POSSIBLE BLOWN HEAD GASKET OR CRACKED HEAD:

- Coolant loss or leakage
- Water in oil
- Constant overheating
- Bubbling or foaming coolant
- White smoke out of the tailpipe
- Rapid cooling system pressure build-up before engine is warm
- Low cylinder compression
- Coolant on spark plugs
- Engine power loss
- Very rough idle

cooling system maintenance



CRC

Radiator Anti-Rust & Water Pump Lubricant

For use in all cooling systems up to 22 quarts. Lubricates water pump bearings and seals preventing rust and corrosion.

05335 12 fl. oz.



CRC

10 Minute Radiator Flush One-Step Cleaner

Works in 10 minutes! Removes grease, oil, scale, rust and sludge while neutralizing acids in antifreeze.

05337 12 fl. oz. 12/cs



CRC

Enginkool™ Engine Cooling System

Prevents loss of heat conductivity to cooling system fluids, which causes overheating. Transfers heat from metal to coolant to reduce engine temperatures. Compatible with all anti-freeze solutions.

05348 30 fl. oz. 12/cs



CRC

Copper Block Weld™ Block & Radiator Sealer

Modified liquid glass formula permanently repairs cracks in aluminum and iron engine blocks and cylinder heads, radiators and freeze plugs using a copper-ceramic sealing system.

05371 16 fl. oz. 12/cs



K&W

Heavy Duty Radiator Stop Leak

Pour-in and drive-off formula. Mixes with all standard coolants, safe for all types of radiators. Seals holes and cracks in radiators and heater cores.

401211 11 fl. oz. 12/cs



K&W

7 Minute Radiator Rapid Flush

Fast acting formula removes rust, scale and hard water deposits in one application. Contains no acids or chemicals harmful to radiators or cooling systems. One can cleans a four-gallon cooling system.

401320 11 fl. oz. 12/cs

power steering system maintenance



K&W

Steer-X™ Power Steering Stop Leak

Quickly stops leaks in all domestic, imported and heavy-duty power steering systems. Conditions dried and hardened seals and prevents against future leaks.

403015 15 fl. oz. 12/cs



CRC

Power Steering Fluid

For domestic and most import applications. Prevents foaming, oxidation, corrosion and seal shrinkage. Provides uniform performance over a wide range of temperatures. May be added to existing fluid.

05340 12 fl. oz. 12/cs



CRC

Steer-Aid™ Power Steering Conditioner & Leak Stop

Prolongs the life of the power steering unit by restoring elasticity of seals. Prevents foaming. Non-clogging. Stops internal leaks.

05345 12 fl. oz. 12/cs



Sta-Lube

Power Steering Fluid

Meets specs of Ford, GM, and most import manufacturers.

SL2631 15 fl. oz. 12/cs
SL2633 1 gallon 4/cs



Sta-Lube

Power Steering Fluid Pre-1989 Chrysler

Designed for all pre-1989 model year Chrysler, Dodge and Plymouth power steering units (except trucks).

SL2641 15 fl. oz. 12/cs



Sta-Lube

Universal Power Steering Fluid

Acura, Audi, Honda, Subaru and domestic compatible. Prevents foaming, oxidation, corrosion and seal shrinkage.

SL2651 15 fl. oz. 12/cs

transmission maintenance



Hardware

CRC sells a variety of products from all product lines and brands to its consumer/hardware customers in addition to products and packaging developed specifically for this segment. In a market where the product assortment varies considerably from store to store and distributor to distributor, it is a great advantage to have a supplier like CRC – a single source that can provide all your specialty chemical needs.



Industrial & Electrical

CRC's Industrial and Electrical Products Division provides MRO (Maintenance, Repair & Overhaul) chemicals for industrial-electrical and mechanical repair and maintenance supplying manufacturing plants, buildings and facilities, construction, mining, transportation and utilities. The Industrial and Electrical product lines include precision cleaners, degreasers, lubricants, corrosion inhibitors and sealants.



Trans-X® Slip-Stop & Leak Fix

Quickly eliminates leaks, restores smooth shifting and prevents future leaks in automatic transmissions. Conditions seals.

402015	15 fl. oz. can	12/cs
402032	30 fl. oz. can	12/cs
402033	32 fl. oz. bottle	12/cs



Trans-X® High Mileage Automatic Transmission Treatment

Developed for vehicles with 75,000 miles or more. High tech formula extends transmission life and stops leaks in automatic transmissions.

402916	16 fl. oz.	12/cs
--------	------------	-------



Trans-X® Slip-Stop & Leak Fix for Trucks

Effectively repairs leaks in automatic transmissions, power steering and hydraulic systems. Prevents leaks caused by aged seals and gaskets. Powerful cleaning agents remove sludge, gums and varnish to prevent premature failure and extends transmission life.

402035	32 fl. oz.	12/cs
--------	------------	-------



Trans-Kleen™ Automatic Transmission Treatment

Cleans harmful gums and varnishes while you drive. Smooths shifting and eliminates hesitating, creepage, and between-speeds lurching.

05332	12 fl. oz.	12/cs
-------	------------	-------



MOPAR ATF+3® Transmission Fluid

Use where Chrysler spec MS7176E is required. Resists high-temperature breakdown and provides long lasting lubrication.

SL2342	32 fl. oz.	12/cs
--------	------------	-------

MOPAR ATF+3® is a registered trademark of Chrysler Corporation.



Want more information about CRC Industrial & Electrical Products? Contact CRC Customer Service: 800-272-8963

corrosion inhibitors/protectants



CRC

Rubberized Undercoating▲

Provides a bubble-free, flexible shield against moisture, salt and road debris. Deadens outside road noise and will not crack or peel. Low VOC formula.

05347 16 oz. 12/cs



CRC

Battery Terminal Protector▲

Lead-free, long-lasting red film coating. Protects battery terminals, cables and bulkhead connectors from corrosion, a leading cause of hard starting and battery failure.

05046 7.5 oz. 12/cs



CRC

Belt Conditioner▲

Eliminates noise and extends belt life. For use on all types of belts, such as serpentine, flat and v-type belts. Prevents slippage and glazing. Removes oil, grease and glaze. Use every 4,000 miles to prevent drying out and slippage.

05350 7.5 oz. 12/cs



CRC

Rust Converter

Fast-drying milky-white vinyl/acrylic coating stops rust in its tracks. Neutralizes rust and converts it to a tough primer in one easy step. Apply to any rusted metal surface. Non-flammable and contains no known carcinogens like other competitive products.

14610 15 oz. 12/cs
18418 32 fl. oz. 12/cs
18419 gallon 4/cs



CRC

Instant Cold Galvanize™▲

Forms a tough, 92% pure zinc coating to fight rust and corrosion. Provides protection of hot dip galvanize with on-the-job convenience. Leaves a flat gray paintable finish on surfaces.

05048 13 oz. 12/cs



CRC

Wire Dryer

Starts wet engines and instantly drives out moisture that can cause electrical failure and hard starting. Cleans and waterproofs all electrical system parts. Waterproof film leaves a fine protective coating on ignition and electrical systems. Reduces wear and ensures proper electrical current flow.

05104 6 oz. 12/cs



CRC

Zinc-It® Instant Cold Galvanize

High-performance coating of 92% pure zinc that electrochemically bonds with ferrous metals to form a galvanic cell. Excellent touch-up for damaged galvanized coatings. Use on threads, fasteners, conduit, welds, railings, grates, doors, trailers, guard rails, more.

18412▲ 13 oz. 12/cs
18413 1 gallon 4/cs



CRC

Bright Zinc-It® High Shine Instant Cold Galvanize

A light duty corrosion inhibitor and sacrificial coating that protects ferrous metals from oxidizing. Creates a barrier film between the environment and the base metal to prevent formation or spread of corrosion. Use on threads, fasteners, conduit, welds, railings, grates, doors, trailers, guard rails, more.

18414 13 oz. 12/cs

Salt Terminator® Engine Flush, Cleaner & Corrosion Inhibitor



CLEANS & PROTECTS ANYTHING EXPOSED TO SALT

Saltwater, salt air and road salt can lead to rust, corrosion, vehicle damage and costly repairs. SALT TERMINATOR dissolves destructive salt debris that can't be removed by water alone and leaves a protective coating, guarding against future corrosion. Regular maintenance with SALT TERMINATOR can help extend the life of vehicles, trailers, tools, gear and equipment.

Lab-tests show SALT TERMINATOR excels at removing heavy salt deposits without leaving behind a spotty residue like other similar products. Spray on SALT TERMINATOR to clean and protect virtually any surface. Or, use the mixer unit with any of the concentrate formulas. It automatically dilutes the concentrate and siphons it through a standard garden hose. No scrubbing or rinsing required. Biodegradable.

SX22	22 fl. oz.	12/cs
SX32	32 fl. oz.	7/cs
SX32M	32 fl. oz. w/ mixer	6/cs
SX128	1 gallon	6/cs
SX55	55 gallon	1
SXMXR	mixer only	12/cs



▲This product is very flammable. Do not apply while equipment is energized.



Sta-Lube

New Generation™ Disc & Drum Brake Wheel Bearing Grease

Meets late-model high-tech specifications. NLGI GC-LB lithium complex base. Wide temperature range of -40°F to 450°F. Use on late-model wheel bearings, chassis and suspension points.

SL3110	14 oz. cartridge	10/cs
SL3111	14 oz. can	14/cs
SL3116	7 lb. pail	4/cs



Sta-Lube

Marine Grease Boat Trailer and 4X4 Grease

Excellent water resistance. NLGI-2 aluminum complex base for 4WD and boat trailer wheel bearings. Drop point: 500°F.

SL3120	14 oz. cartridge	10/cs
SL3121	14 oz. can	14/cs
SL3125	35 lb. pail	1
SL3127	120 lb. keg	1
SL3184	3 oz./3 per card	6/cs



Sta-Lube

Heavy-Duty Drum Brake Wheel Bearing Grease

For drum brakes and slow speed bearings. NLGI-2 sodium base. Ideal for use where heavy loads and slow speeds are prevalent. Drop point: 360°F.

SL3131	14 oz. can	12/cs
SL3135	35 lb. pail	1
SL3136	7 lb. tub	1



Sta-Lube

Moly-Graph® Extreme Pressure Grease

Molybdenum and graphite establish a fine micron plating on all surfaces. Lithium base NLGI-2 grease with drop point of 350°F. Great for use on ball joints, chassis points, bushings and roller bearings.

SL3330	14 oz. cartridge	10/cs
SL3141	14 oz. can	12/cs
SL3144	3 oz./3 per card	6/cs
SL3145	35 lb. pail	1
SL3146	7 lb. tub	4/cs



Sta-Lube

Super White™ Multi-Purpose Grease

Contains anti-wear and anti-friction additives. Lithium base NLGI-2 grease with drop point of 350°F. Perfect for light duty applications where appearance matters.

SL3150	14 oz. cartridge	10/cs
SL3151	14 oz. can	12/cs
SL3360	10 oz. tube	6/cs
SL3361	1.75 oz. tube	24/cs



Sta-Lube

Hi-Temp Disc Brake Wheel Bearing Grease

For high temperature, high speed bearings. NLGI-2 aluminum complex base. For use on disc brake systems, chassis points and suspension systems. Drop point: 500°F.

SL3160	14 oz. cartridge	10/cs
SL3161	14 oz. can	12/cs
SL3165	35 lb. pail	1
SL3166	7 lb. pail	4/cs



Sta-Lube

Sta-Plex™ Extreme Pressure Premium Red Grease

A superior multi-purpose certified lithium complex based NLGI #2 grease. Contains extreme pressure, anti-wear, and anti-oxidation additives. Ideal for high temperature and performance applications. Drop point: 500°F.

SL3190	14 oz. cartridge	10/cs
SL3191	14 oz. can	12/cs
SL3195	35 lb. pail	1
SL3197	120 lb. keg	1



Sta-Lube

Red Grease #2

Smooth, tacky, red lithium complex grease fortified with rust and oxidation inhibitors. Good water resistance, won't wash out. Great for sliding surfaces and open gears and for lubricating moving parts in mowers, reapers, water pumps, electric motors, ball and roller bearings, kilns, assembly plants, and truck applications.

SL3400	14 oz. cartridge	10/cs
--------	------------------	-------



Sta-Lube

General Purpose Lithium Grease

Lithium base NLGI-2 grease designed for light duty applications. Use on motor bearings, pump bearings and light duty applications. Drop point: 350°F.

SL3310	14 oz. cartridge	10/cs
SL3311	14 oz. can	12/cs



CRC Sta-Lube

Synthetic Brake & Caliper Grease

Synthetic grease prevents caliper binding, vibration and corrosion. Contains molybdenum, PTFE and graphite for an extreme temperature range of -40°F to 500°F. Use on every brake job!

05351	2.5 oz. tube in display	6/cs
05352	1/3 oz. carded packets	12/cs
05353	12 oz. tub	12/cs
05354	2.5 oz. carded tube	12/cs
05359	8 fl. oz. bottle	6/cs
SL3301	2.5 oz. tube in display	6/cs
SL3302	1/3 oz. carded packets	12/cs
SL3303	12 oz. tub	12/cs
SL33011	2.5 oz. carded tube	12/cs



CRC

Silaramic® Brake System Grease

Protects all moving caliper hardware, mating surfaces and backing plates with the latest rust, oxidation and anti-wear additives to provide lasting protection against friction, wear and corrosion.

05361	5 oz.	12/cs
-------	-------	-------



Sta-Lube

C.V. (Constant Velocity) Joint Grease

Protects against rust and oxidation with extreme pressure additives designed to sustain the shock loads encountered in CV joints.

SL3174	4 oz. carded tube	12/cs
SL3174B	4 oz. tube	36 pcs

Product	Grease Type	NLGI Grade	Color	Operating Temperature Constant (Application Dependent)	Water Resistance	Timken OK Load	Additives
Sta-Lube® New Generation™ Wheel Bearing Grease for Disc and Drum Brakes	Lithium Complex	1.5	Amber	-40°F to 450°F	Very Good	50 lbs.	Extreme Pressure, Anti-Wear, Anti-Rust, Tackifier
Sta-Lube® Marine Grease for Boat Trailer Wheel Bearings	Aluminum Complex	2	Blue	0°F to 450°F	Excellent	NA	Anti-Rust, Polymer Adhesives
Sta-Lube® Heavy Duty Drum Brake Wheel Bearing Grease	Sodium	2.5	Amber	10°F to 250°F	Poor	NA	Anti-Oxidant
Sta-Lube® Moly-Graph® Extreme Pressure Multi-Purpose Lithium Grease	Lithium	2	Black	-25°F to 250°F	Very Good	45 lbs.	Extreme Pressure, Molybdenum Disulfide, Anti-Wear, Anti-Rust, Anti-Oxidant
Sta-Lube® Super White Multi-Purpose Grease	Lithium	1.5	White	0°F to 300°F	Good	25 lbs.	Whitening Agents, Anti-Rust, Anti-Oxidant, Anti-Wear
Sta-Lube® Hi-Temp Disc Brake Wheel Bearing Grease	Aluminum Complex	2	Black	0°F to 400°F	Excellent	60 lbs.	Rust and Oxidation Inhibitors, Anti-Wear Extreme Pressure, Additives, Molybdenum Disulfide, Graphite
Sta-Lube® Sta-Plex™ Premium Red Grease	Lithium Complex	2	Red	30°F to 400°F	Excellent	60 lbs. min	Extreme Pressure, Anti-Wear, Anti-Rust, Anti-Oxidant, Tackifier
Sta-Lube® Red Grease #2	Lithium Complex	2	Red	0°F to 400°F	Very Good	60 lbs.	Extreme Pressure Anti-Rust, Anti-Oxidant
Sta-Lube® Lithium General Purpose Grease	Lithium	2	Amber	0°F to 300°F	Very Good	NA	NA
Sta-Lube® Constant Velocity Joint Grease	Lithium	1	Black	10°F to 275°F	Good	50 lbs.	Extreme Pressure, Anti-Wear, Rust and Oxidation Inhibitors
Sta-Lube® Engine Assembly Lube and Anti-Seize	Lithium	0.5	Black	0°F to 300°F	Good	50 lbs.	Extreme Pressure Molybdenum Disulfide, Anti-Wear, Anti-Rust, Anti-Oxidant, Tackifier

NA = Not Applicable ND = Not Determined

hand cleaners



Dri-Kleen™ Foaming Waterless Hand Cleaner

A unique foaming waterless hand cleaner that gets the job done without harsh solvents. Fortified with Lanolin, conditions skin and leaves hands soft and smooth. Use anytime, anywhere—no water necessary.

05506 5.5 oz. 12/cs



Lanolin Cream Hand Cleaner

Hand soap. Removes grease, carbon, paints, tar, gasket cement and more. Fortified with lanolin, aloe vera, vitamin E, jojoba and wheat germ extract.

SL1210 5 oz. tube 12/cs
SL1211 14 oz. can 12/cs
SL1217 7 lb. can 6/cs



Pumice Hand Cleaner with Lemon Scent

Contains buffing grade pumice for deep scrubbing action plus lanolin to protect your skin.

SL1621 14 oz. can 12/cs
SL1627 7 lb. can 6/cs



Mechanix Orange™ Citrus Hand Cleaner with Pumice

Formulated with the natural power of citrus. Fine grade pumice quickly cleans away the toughest soils. pH balanced to be gentle on hands. Leaves hands fresh.

SL1712 16 fl. oz. 12/cs
SL1719 1 gal. w/pump 4/cs



Fluid Oil Pump

Constructed of durable PVC plastic. For all fluid reservoirs including differentials, transmissions and gear cases. Dispenses 1 fl oz of product with each depression. Designed to fit all Sta-Lube quart, half-gallon and gallon containers.

SL4344 6/cs

Hypoid 90

Lower Unit Gear Lube

Extreme pressure gear oil manufactured with a highly refined base oil and a specially selected additives package designed to lubricate gears under high load conditions.

06441 10 fl. oz. 6/cs

GL-4 Multi-Purpose Gear Oil SAE 140

High quality gear oils with anti-rust, anti-oxidation and extreme pressure additives for maximum lubrication and protection.

SL24228 32 fl. oz. 12/cs
SL24238 1 gallon 4/cs
SL24258 5 gallon 1

GL-4 Multi-Purpose Gear Oil 85W90

High quality gear oils with anti-rust, anti-oxidation and extreme pressure additives for maximum lubrication and protection.

SL24229 32 fl. oz. 12/cs
SL24239 1 gallon 4/cs
SL24259 5 gallon 1



GL-5* PLUS New Generation™ Heavy Duty Limited Slip Gear Oil SAE 85W140

Excellent for use where seasonal temperatures fluctuate widely. Minimum viscosity change during service. Superior performance in extreme pressure and high load conditions.

SL2432 32 fl. oz. 12/cs
SL2433 1 gallon 4/cs
SL2435 5 gallon 1

GL-5* PLUS New Generation™ Heavy Duty Limited Slip Gear Oil SAE 75W90

Protects against corrosion, seal damage, oxidation and wear. Provides better protection and extended drain intervals. Provides protection under both high speed/low torque and low speed/high torque conditions.

SL2462 32 fl. oz. 12/cs
SL2463 1 gallon 4/cs

GL-5* PLUS New Generation™ Limited Slip Gear Oil SAE 80W90

Thermally stable, high-quality, multi-purpose automotive and truck lubricant with extreme pressure properties. Especially suited for use in high performance differentials. Contains rust and corrosion inhibitors.

SL2472 32 fl. oz. 12/cs
SL2473 1 gallon 4/cs
SL2475 5 gallon 1
SL2479 55 gallon 1

SYN-GO® Multi-Grade Full Synthetic Gear Oils

High quality fully synthetic gear oils developed for daily and extreme use applications. Available in OEM Grade/Extended Service and Multi-Grade formulations. 75W140 OEM Grade meets and exceeds many OEM, military and SAE specs and lasts up to two times as long as conventional gear oils. Multi-Grade gear oils cover seven viscosity grades and also meet and/or exceed many OEM specs.

Multi-Grade SAE 75W90

SL2482 32 fl. oz. 6/cs

Multi-Grade SAE 75W140

SL2492 32 fl. oz. 6/cs

OEM/Extended Interval 75W140

SL2495 32 fl. oz. 6/cs
SL2496 64 fl. oz. 4/cs



Product	SAE Number	VIS @ 40°C/104°F CST	VIS @ 100°C/212°F CST	Base	AGMA
Sta-Lube® GL-4 Multi-Purpose Gear Oil	85W90	200	17	Mineral Oil	5 EP USS 224
Sta-Lube® GL-4 Multi-Purpose Gear Oil	140	400	28	Mineral Oil	8 EP USS 224
Sta-Lube® GL-5* Plus New Generation™ Heavy Duty Gear Oil with Limited Slip	85W140	345	26	Mineral Oil	7 EP
Sta-Lube® GL-5* Plus New Generation™ Heavy Duty Gear Oil with Limited Slip	75W90	110	17	Mineral Oil	6 EP
Sta-Lube® GL-5* Plus New Generation™ Heavy Duty Gear Oil with Limited Slip	80W90	136	15	Mineral Oil	4 EP
Sta-Lube® Syn-Go® Synthetic Gear Oil	75W140	156	25	Synthetic Fluid	5 EP

cutting oil & shop supplies



Sta-Lube
Compressor Oil SAE 30
 Solvent refined and clay filtered for long-lasting, anti-foul operation.
 SL22131 32 fl. oz. 12/cs
 SL22133 1 gallon 4/cs



Sta-Lube
Universal 2-Cycle Oil
 Minimizes plug fouling and sticking rings.
 SL2261 15 fl. oz. 12/cs
 SL2262 32 fl. oz. 12/cs



Sta-Lube
Soluble Oil
 Improves cleaning and lubrication during metal cutting and grinding.
 SL2512 32 fl. oz. 12/cs
 SL2513 1 gallon 4/cs
 SL2515 5 gallon 1
 SL2519 55 gallon 1



Sta-Lube
Air Tool Oil
 Lubricates and protects air tools. Reduces rust, varnish and sludge.
 SL2531 15 fl. oz. 12/cs
 SL2533 1 gallon 4/cs



Sta-Lube
Honing & Cutting Oil
 Reduces heat and friction to ease cutting and extend tool life.
 SL2523 1 gallon 4/cs



Sta-Lube
Bar & Chain Lubricant
 Reduces wear and friction. Remains fluid in cold temperatures.
 SL2612 32 fl. oz. 12/cs



Sta-Lube
Hydraulic & Jack Oil
 Prevents foaming, rust, oxidation and seal swell.
 SL2621 15 fl. oz. 12/cs
 SL2552 32 fl. oz. 12/cs
 SL2553 1 gallon 4/cs
 SL2555 5 gallon 1

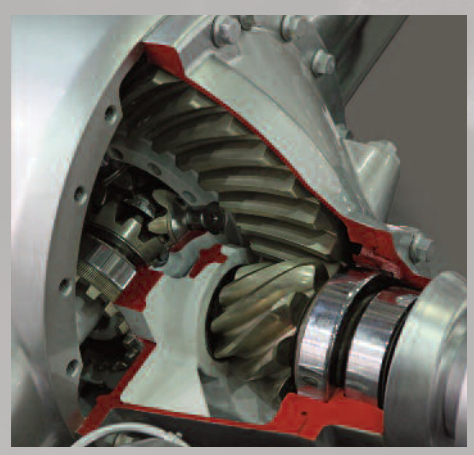
differential additives



K&W
Trans-X® Posi-Trac® Limited Slip Gear Oil Additive
 Maintains smooth operation of the limited-slip unit and reduces friction, wear and overheating while eliminating chatter. Meets GM, Ford and Chrysler specifications.
 402508 7 fl. oz. 12/cs



Sta-Lube
Equa-Torque® Limited Friction Modifier
 Stops chattering, jerking and slipping on axles with traction equalizers, limited-slip and posi-traction differentials. Meets GM, Ford and Chrysler specifications.
 SL2411 4 fl. oz. 12/cs
 SL2411B 4 fl. oz. 36/cs





Sure Shot® Reusable Sprayer



All-metal, one quart, reusable air-pressurized sprayer. For use with most bulk lubricants, solvents and corrosion inhibitors. Tested to 200psi.

14016 1 unit

SURE SHOT® is a registered trademark of Milwaukee Sprayer Mfg. Co.



Heavy Duty Lever Grease Gun



3-way easy loading for standard 14 oz cartridges. Provides 10,000 lbs of pressure. Short stroke feature for confined areas. Sure-grip knurled barrel. Heavy duty thick wall steel construction.

SL37019 1 unit

Grease Gun Flexible Hose 12"

For use with Sta-Lube Grease Gun #SL37019.

SL46022 10/cs



Fluid Oil Pump



Constructed of durable PVC plastic. For all fluid reservoirs including differentials, transmissions and gear cases. Dispenses 1 fl oz of product with each depression. Designed to fit all Sta-Lube quart, half-gallon and gallon containers.

SL4344 6/cs



Commercial Pump Sprayer



A poly tank sprayer designed for professional use. Easy to use. Holds one gallon.

High density polyethylene. Equipped with a 36" reinforced multi-layer PVC braided hose and adjustable nozzle.

MK1991 1 unit
MK1991A Complete pump assembly
MK1991C Shutoff assembly



Empty Trigger Bottle



New 24 oz design improves stability while Level III fluorination provides maximum durability. Features blank lines and charts for product and safety information.

14021 24 oz. capacity 12/cs



Long Handle Dipping Basket



13" handle and sturdy basket for hands-free cleaning of a variety of metal parts.

For use with Tyme® 15 gallon pail or other bulk cleaning agents.

14061 1 unit



RTV Cartridge Gun



For use with CRC RTV Silicone Cartridges. A high quality, parallel frame, hex rod caulk gun with an easy-to-dispense 10:1 thrust ratio.

14054 12/cs



Salt Terminator® Mixer Unit



For use with SALT TERMINATOR concentrate.

SXMXR 12/cs



5 Shelf Retail Floor Display with 4 Header Options

Easy to assemble, customizable floor display maximizes floor space, attracts attention and increases product sales. You choose the display header graphics and the products you want to feature!

Unit dimensions: 60"H x 16"W x 14"D
05700 1 display 1/cs



#05700



A0810-DISP



PG0810-DISP



MAR0810-DISP



HD0810-DISP

interiors/appearance products



Glass & Dash™ Multi-Use Cleaner

Cleans glass, mirrors, acrylic, clear plastic and other surfaces without leaving a film or streaks.

05401 18 oz. 12/cs



Tannery® Leather, Vinyl & More... All-In-One Cleaner & Conditioner

Cleans, conditions, protects and preserves leather, vinyl, rubber, plastic, trim and fiberglass. Helps guard against harmful sunlight and extreme temperature.

40138 8 fl. oz. 12/cs
40173 10 oz. 12/cs



Tannery® Vintage™ Leather Cleaner & Conditioner

Cream leather cleaner and conditioner with aloe vera and glycerin to help hydrate leather, making it supple and smooth. Prevents drying and cracking due to sunlight and extreme weather.

40144 10 oz. 12/cs



Duster™ Moisture-Free Dust & Lint Remover

Quickly and safely blasts away dirt, dust, lint and other contaminants from any surface. Ideal for sensitive electronics. Penetrates hard-to-reach cracks and crevices that normal hand-dusting cannot reach.

05185 8 oz. 12/cs



VisiClear™ Display Cleaner & Electronic Screen Cleaner

Streak-free foam cleaner clings, won't drip, and is alcohol and ammonia free. Will not damage screen protective coatings. Use on plasma/LCD displays, touch-screens, computers, cell phones and PDAs, GPS screens and CRT monitors. Leaves no residue and dries fast.

05131 6.9 oz. 12/cs



HydroForce® Glass Cleaner Professional Strength

Quickly cuts through the toughest dirt, dust, fingerprints and haze without streaking. Foaming agent provides greater coverage and less run-off on vertical surfaces.

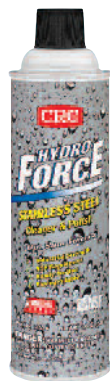
14411 32 fl. oz. trigger 12/cs
14412 18 oz. aerosol 12/cs
14413 1 gallon 4/cs



HydroForce® Stainless Steel Cleaner & Polish

Exclusive ultra shine formula. Eliminates dirt, dust, fingerprints and watermarks. Leaves behind a non-greasy protective barrier to resist return of stains and water spots.

14424 18 oz. 12/cs



HydroForce® Super Citrus™ Heavy Duty Degreaser

Naturally formulated degreaser with the superb cleaning power of citrus. Leaves no residue.

14440 15 oz. aerosol 12/cs
14441 1 gallon 4/cs
14442 5 gallon 1
14443 55 gallon 1



HydroForce® All Purpose Degreaser

Breaks-up and lifts off grease, oil and dirt deposits. Cleans up to three times the surface area of competitive degreasers.

14406 18 oz. aerosol 12/cs
14407 32 fl. oz. trigger 12/cs
14408 1 gallon 4/cs
14409 5 gallon 1
14410 55 gallon 1



HydroForce® Butyl-Free All Purpose Cleaner

Concentrated formula. Butyl-free, biodegradable, non-corrosive, non-abrasive cleaner. Non-flammable. Safe on most plastics.

14401 32 fl. oz. trigger 12/cs
14402 1 gallon 4/cs
14403 5 gallon 1
14404 55 gallon 1
14405 18 oz. aerosol 12/cs



HydroForce® Zero VOC General Purpose Cleaner

Strong enough to attack and remove tough dirt and grime. Safe enough for all daily cleaning tasks. Moderate pH, zero VOC.

14446 32 fl. oz. trigger 12/cs
14447 1 gallon 4/cs
14448 5 gallon 1
14449 55 gallon 1



winter & specialty products



Magic Oil™ Lock Lube & De-Icer▲

Small enough to fit anywhere from glove boxes and desk drawers to toolboxes. Stops squeaks, frees frozen or seized locks and mechanisms, protects against corrosion, loosens rusted parts. Provides long-lasting lubrication without leaving a sticky residue.

05130 0.4 oz. (24 pk) 4/cs



Jump Start® Starting Fluid with Lubricity▲

Improves cold or humid starts on gasoline or diesel engines. Effective to -65°F.

05671 11 oz. 12/cs



Ice-Off® Spray De-Icer

Melts ice, snow and frost from windshields on contact. Thaws frozen locks and is effective to sub-zero temperatures.

05346 12 oz. 12/cs



Battery Terminal Protector▲

Lead-free, long-lasting red film coating. Protects battery terminals, cables and bulkhead connectors from corrosion, a leading cause of hard starting and battery failure.

05046 7.5 oz. 12/cs



For Gas Tanks Water Remover (Isopropanol Formula)

Removes water from gasoline and protects fuel to -50°F. Inhibits rust in fuel tank and prevents fuel line freezing. Assures quicker starting and faster pick-up. Recommended use: 3-4 times a year.

05343 12 fl. oz. 12/cs



Stor-X® Fuel Stabilizer

Super-concentrated formula keeps fuel fresh up to one year. Stabilizes fuel by inhibiting varnish, peroxide and gum development in gasoline and diesel fuel during storage.

402815 8 fl. oz. 12/cs



PhaseGuard4® Ethanol Fuel Treatment

Protects all gas-powered 2- and 4-cycle engines from the harmful effects of ethanol. Helps prevent phase separation, protects against corrosion, cleans the fuel system, stabilizes fuel and restores power. 1 oz treats 10 gallons for in-season protection. 1 oz treats 5 gallons for storage. Stabilizes fuel for 24+ months.

06141 8 fl. oz. 12/cs
06142 16 fl. oz. 12/cs
06143 32 fl. oz. 6/cs



PhaseGuard4® Stor & Go® Ethanol Fuel Treatment for Small Engines

Small engine formula provides the maximum protection available to prevent harmful phase separation of fuel that can lead to equipment failure. Protects against corrosion, cleans fuel system components, stabilizes fuel and restores power. 1 fl oz packet treats up to 2.5 gallons in-use or for storage. Stabilizes fuel for 24+ months.

05068 50 - 1 fl. oz. packets 4/cs in a display box



Inner Slide Lube

Lubricates and increases slide motion, extending forklift equipment life in automotive, heavy duty, farm, industrial, marine and shop applications. Fortified with molybdenum disulfide and extreme pressure additives to resist pound-out and prevent destructive metal-to-metal contact. Designed for forklift inner slide rails.

05305 10 oz. 12/cs



Natural Degreaser™ Citrus Based Degreaser

Naturally formulated, biodegradable degreaser. No rinsing necessary. Leaves no sticky residue. Non-corrosive and effective for use on all metals.

14005 16 oz. 12/cs



RTV Silicone Adhesive & Sealant

Pressurized tubes:

14055 Clear 7.25 oz. 12/cs
14056 White 7.25 oz. 12/cs
14057 Blue 7.25 oz. 12/cs
14059 Red 8.75 oz. 12/cs
14072 Black 8.75 oz. 12/cs

Caulk-type cartridges:

14073 Clear 10.1 fl. oz. 12/cs
14074 White 10.1 fl. oz. 12/cs
14075 Red 10.1 fl. oz. 12/cs



Minute Mend™ Epoxy Putty

Use for patching or repairing wood, metal, fiberglass and plastic. Bonds to wet or dry surfaces, even under water. Ready to use in less than one minute. Can be tapped, sawed, drilled, stained or painted.

14070 4 oz. 24/cs
14071 2 oz. 40/cs



▲This product is very flammable. Do not apply while equipment is energized.

diesel & heavy truck maintenance

CRC

Fuel Therapy® Diesel Injector Cleaner Plus

Cleans injectors, disperses water, conditions & stabilizes fuel and lubricates fuel system for increased engine life. Increases power and fuel economy and reduces emissions. ULSD Approved. OK for Biodiesel fuels.

05212	12 fl. oz.	12/cs
05232	30 fl. oz.	12/cs
05228	1 gallon	4/cs
05225	5 gallon	1
05255	55 gallon	1

CRC

Fuel Therapy® Diesel Injector Cleaner with Anti-Gel

Prevents diesel fuel from gelling in cold temperatures. Lowers pour point by as much as 35°F. Cleans injectors and helps restore spray pattern for more efficient combustion. ULSD Approved. OK for Biodiesel fuels.

05412	12 fl. oz.	12/cs
05432	30 fl. oz.	12/cs
05428	1 gallon	4/cs
05425	5 gallon	1
05455	55 gallon	1

CRC

Cold Flow™ Diesel Anti-Gel with Lubricity

Prevents fuel from gelling by lowering pour point by as much as 40°F. Disperses water and contains lubricity additives for low sulfur fuels. ULSD Approved. OK for Biodiesel fuels.

05612	12 fl. oz.	12/cs
05632	30 fl. oz.	12/cs
05625	5 gallon	1
05655	55 gallon	1

Product	SKU	Net Contents	For Preventive Maintenance Treats:	For Pre-Existing Conditions Treats:
CRC Fuel Therapy® Fuel Injector Cleaner Plus	05212	12 fl. oz.	35 gallons	8 gallons
	05232	30 fl. oz.	125 gallons	50 gallons
	05228	1 gallon	500 gallons	200 gallons
	05225	5 gallon	2,500 gallons	1,000 gallons
	05255	55 gallon	27,500 gallons	11,000 gallons
CRC Fuel Therapy® Fuel Injector Cleaner with Anti-Gel	05412	12 fl. oz.	35 gallons	8 gallons
	05432	30 fl. oz.	125 gallons	50 gallons
	05428	1 gallon	500 gallons	200 gallons
	05425	5 gallon	2,500 gallons	1,000 gallons
	05455	55 gallon	27,500 gallons	11,000 gallons
CRC Cold Flow™ Anti-Gel with Lubricity	05612	12 fl. oz.	125 gallons	75 gallons
	05632	30 fl. oz.	500 gallons	125 gallons
	05625	5 gallon	5,000 gallons	2,500 gallons
	05655	55 gallon	55,000 gallons	27,500 gallons

CRC

Quick Flow™ Emergency Diesel-Gel Relief

Reliquefies gelled fuel in minutes! Totally disperses water and lowers pour point by as much as 35°F. Prevents future gelling since it contains anti-gel. ULSD Approved. OK for Biodiesel fuels.

05911	30 fl. oz.	12/cs
-------	------------	-------

CRC

1-Tank Power Renew™

A concentrated one-tank cleanup that delivers a powerful shock to dirty fuel systems. Formulated with the maximum available chemistry, it's the most powerful diesel fuel system cleaner on the market. Excellent cleanup for the sticky injectors frequently found in modern common rail systems.

05832	32 fl. oz.	12/cs
-------	------------	-------

CRC

Bio-Con™ Sludge Sediment Remover

Removes sludge sediment caused by bacteria from diesel fuel and furnace oils and improves fuel stability in storage.

05557	12 fl. oz.	12/cs
05558	5 gallon	1

CRC

Diesel Dry™ Diesel Water Remover

Eliminates water and protects engine against damage caused by water build-up. Minimizes smoke and improves fuel economy.

05670	12 fl. oz.	12/cs
-------	------------	-------

CRC

Air Brake Anti-Freeze & Conditioner

Eliminates moisture accumulation and prevents air brake systems from icing up. Protects against corrosion in metal brake lines.

05532	32 fl. oz.	12/cs
05528	1 gallon	4/cs
05555	55 gallon	1

KW

Trans-X® Slip-Stop & Leak Fix for Trucks

Effectively repairs leaks in automatic transmissions, power steering and hydraulic systems. Prevents leaks caused by aged seals and gaskets. Powerful cleaning agents remove sludge, gums and varnish to prevent premature failure and extends transmission life.

402035	32 fl. oz.	12/cs
--------	------------	-------

CRC

6-56® Marine Multi-Purpose Lube

Clear, thin film lubricates and protects against wear and saltwater corrosion. Drives out moisture to help start wet engines. Loosens rusted parts. Contains no silicone components that can harm oxygen sensors.

06005	5 oz.	12/cs
06006	9 oz.	12/cs
06007	11 oz.	12/cs
06008	1 gallon	4/cs
06010	5 gallon	1 pail

CRC

6-56® Marine Multi-Purpose Lube Zero VOC

Odor-free, zero VOC alternative. Provides long-lasting, superior lubrication. Drives out moisture that can cause electrical failures and hard starting. Penetrates deep through rust and corrosion to loosen frozen parts. Contains no silicone components that can harm oxygen sensors.

06002	11 oz.	12/cs
-------	--------	-------

CRC

Cleaner & Degreaser

Cleans and degreases marine engines and non-sensitive electrical parts and equipment in place. Breaks through tough grease on motors, gears, chains and other metal parts. Leaves no residue; non-flammable.

06019	19 oz.	12/cs
-------	--------	-------

CRC

Marine Degreaser Non-Chlorinated▲

Degreases non-sensitive electrical equipment. Easily dissolves and removes grease and other contaminants from tools, gears, chains and other metal parts. Leaves no residue.

06020	14 oz.	12/cs
-------	--------	-------

CRC

Heavy Duty Corrosion Inhibitor▲

Seals out salt air and moisture to prevent corrosion. Will not crack or craze. Flexible amber coating provides long-term protection for metal components, electrical connections, engine components, fasteners, steering and throttle linkages. Contains no silicone components that can harm oxygen sensors.

06026	10 oz.	12/cs
-------	--------	-------

CRC

Engine Stor® Fogging Oil

Protects marine engines during seasonal storage. Clings to internal engine components to keep pistons, rings and cylinder walls corrosion free. Use injection can to fog Evinrude and Johnson motors 1990 and newer equipped with a maintenance valve.

06068	13 oz.	12/cs
06069	1 gallon	4/cs
06070	5 gallon	1 pail
06072▲	13 oz. (injection can)	12/cs

CRC

Dry Lube with PTFE Technology

Micro-thin film dries in seconds! Quickly penetrates and bonds to aluminum, metals, wood, rubber, plastic and more. Helps reduce friction and drag. Seals out moisture to help prevent mildew and corrosion.

06114	10 oz.	12/cs
-------	--------	-------

CRC

PhaseGuard4® Ethanol Fuel Treatment

Protects all gas-powered 2- and 4-cycle engines from the harmful effects of ethanol. Helps prevent phase separation, protects against corrosion, cleans the fuel system, stabilizes fuel and restores power. 1 oz treats 10 gallons for in-season protection. 1 oz treats 5 gallons for storage. Stabilizes fuel for 12+ months.

06141	8 fl. oz.	12/cs
06142	16 fl. oz.	12/cs
06143	32 fl. oz.	6/cs

CRC

Fuel Stabilizer Gasoline & Diesel Formulas

Concentrated, high-potency formula keeps fuel fresh during storage and provides optimum performance year round.

Gasoline: 1 oz treats 5 gallons

06161	8 fl. oz.	12/cs
06162	16 fl. oz.	12/cs
06163	32 fl. oz.	12/cs
06164	1 gallon	4/cs

Diesel: 1 oz treats 10 gallons

06171	8 fl. oz.	12/cs
06172	16 fl. oz.	12/cs

CRC

Engine Tune-Up & Decarbonizer▲

Breaks down carbon, varnish and other harmful deposits in the combustion chamber. Frees sticky rings. Dramatically improves power and performance. Solves many rough-idle or power loss problems. Contains no silicone. For all 2- and 4-cycle engines.

06121	13 oz.	12/cs
-------	--------	-------

CRC

Hypoid 90 Lower Unit Gear Lube

Extreme pressure gear oil manufactured with a highly refined base oil and a specially selected additives package designed to lubricate gears under high load conditions.

06441	10 fl. oz. tube	6/cs
-------	-----------------	------

CRC

Motor Treatment

Cleans gum, varnish and carbon from the fuel system, injectors, pistons, and combustion chamber. Removes moisture from fuel and oil systems and lubricates engine components. For use in gasoline, diesel, ethanol and oil.

05316	16 fl. oz.	12/cs
-------	------------	-------

▲This product is very flammable. Do not apply while equipment is energized.



On & Off Hull & Bottom Cleaner

The #1 hull cleaner and strongest formula available. Works instantly to remove the toughest waterline stains, algae and barnacle stains, rust and gas exhaust stains. Use on fiberglass only. Will not harm gel coat.

MK2032	32 fl. oz.	12/cs
MK20128	1 gallon	4/cs
MK20550	55 gallon	1 drum



On & Off Gel Hull & Bottom Cleaner

Unique viscous formula clings to the surface to remove stubborn scum lines and rust stains. Bold, blue color makes it easy to see where the product has been applied. Brush or roll onto fiberglass surface and rinse off. Pleasant scent.

MK3532	32 fl. oz.	12/cs
MK35128	1 gallon	4/cs



Aluminex™ Heavy Duty Pontoon & Aluminum Hull Cleaner

Maximum strength formula quickly removes the heaviest oxidation and eliminates waterline stains, lime deposits and algae stains. Not for use on painted surfaces.

MK3132	32 fl. oz.	12/cs
MK31128	1 gallon	4/cs



Aluminex™ Clean & Shine Aluminum Cleaner & Brightener

Dual-action formula specially designed to instantly clean and brighten aluminum hulls. With Safe Acid Technology™. Best results on surfaces with light to medium oxidation. Safe on anodized and painted aluminum.

MK3332	32 fl. oz.	12/cs
--------	------------	-------



Big Bully® Natural Orange Bilge Cleaner

Works instantly to emulsify oil, grease, gasoline and diesel fuel. Tough citrus cleaning power absorbs odors and leaves bilge areas clean and fresh. Self-cleaning formula is activated by the rolling action of the boat.

MK2332	32 fl. oz.	12/cs
MK23128	1 gallon	4/cs



Crystal Lakes™ Hull & Bottom Cleaner

Cleans and brightens while removing brown water stains, mold and algae stains, rust stains and more. Crystals mix with warm water to make a safe and economical hull cleaner. One container makes up to six gallons of cleaner.

MK7320	20 oz.	12/cs
--------	--------	-------



Cleaning Detail® Non-Skid Deck Cleaner

Cleans and brightens fiberglass, stainless steel, chrome, brass and aluminum. Removes dirt, grease, grime and chalking. Easy to use on most surfaces above the waterline. Great for non-skid decks, shower stalls and tubs.

MK2132	32 fl. oz.	12/cs
--------	------------	-------



Super Suds™ Boat Soap

Highly concentrated synthetic detergent. Non-streaking. Leaves no residue. Cleans away dirt and grime, leaving surfaces sparkling clean. Makes up to 64 buckets of wash. Will not strip wax. Biodegradable.

MK2232	32 fl. oz.	12/cs
MK22128	1 gallon	4/cs



Spray Away™ All Purpose Cleaner

Cleans grease, grime, oil, rain stains, fish blood and more. Great on virtually any surface. Heavy duty formula is four times stronger than most spray cleaning products. Non-flammable.

MK2832	32 fl. oz.	12/cs
MK28128	1 gallon	4/cs



Grease Away Engine Degreaser

Heavy duty engine degreaser. Formulated for outboards, inboards, stern drives, machinery and more. Spray on/rinse off. Contains no petroleum solvents.

MK5232	32 fl. oz.	12/cs
MK52128	1 gallon	4/cs



Roll Away™ Boat Wash

Water activated to clean and leave a shine on fiberglass hulls and decks. Extra strong formula works great on vinyl, formica, metal hardware, fenders, canvas and sails. Contains no phosphates. Biodegradable.

MK6532	32 fl. oz.	12/cs
MK65128	1 gallon	4/cs



marine products



Mildew Stain Remover
Quickly removes even the toughest mildew and mold stains. Fine mist spray won't run, even on vertical surfaces. No scrubbing necessary. Just spray on, wipe off. Use on any vinyl or hard surface. Safe on boat covers and marine fabrics.
MK3732 32 fl. oz. 12/cs



Inflatables, Tubes & Towables Cleaner
Effectively cleans PVC, Vinyl, Hypalon, EVA, Nylon, Plastic, Neoprene and Polyurethane materials. Helps prevent corrosion of metal hardware. Won't fade covers. Great for cleaning skis and wakeboards.
MK3832 32 fl. oz. 12/cs



Instant Black Streak Remover
Quick, easy and effective. Instantly removes black streaks caused by water runoff on fiberglass, metal and painted surfaces. No scrubbing necessary. Spray on/ wipe off. Commercial grade.
MK6732 32 fl. oz. 12/cs



Ultra Vinyl Cleaner
Removes deeply embedded dirt, grease, oil, suntan lotion, food and beverage stains and more. Easy to use. Concentrated foam cleaner works fast. Excellent for all interior and exterior vinyl.
MK2718 18 oz. 12/cs



Clear Vinyl Cleaner & Polish
Cleans, polishes and protects all transparent clear vinyl in one easy step. Great for isinglass, clear vinyl enclosures, plastic windshields, hatches and instruments made of Plexiglas[®], acrylic, Lexan[®]** and polycarbonates. Spray-on, buff-off.
MK6414 14 oz. 12/cs



Fabric Waterproofer
Premium grade heavy duty water repellent solution. Restores water repellency of cotton and synthetic fabrics. Contains no color or dyes. Use on boat covers, bimini tops, convertible tops, awnings, tents, clothing, footwear and more. Safe on Sunbrella[®]***, Sharkskin[®]**** and other marine grade fabrics.
MK6332 32 fl. oz. 12/cs
MK63128 1 gallon 4/cs



Nu-Teak[™] One Step Teak Cleaner
Cleans teak and other hardwoods. Removes stains and weathering. Contains no acids. Will not raise wood grain. Also great for decks, patios and outdoor furniture.
MK2432 32 fl. oz. 12/cs



Nu-Teak[™] Teak Oil
Seals, preserves and enhances the natural appearance of teak. One easy step; dries quickly. Provides long lasting protection. Contains UV inhibitors to resist weathering. Rich golden color. Use on decking, steps, rails, outdoor furniture and more.
MK3616 16 fl. oz. 12/cs
MK3632 32 fl. oz. 12/cs



Heads Up[™] Liquid Holding Tank Deodorant
Works instantly to control odors. Long-lasting pleasant fragrance. Helps keep holding tanks and recirculating or portable toilets clean and breaks down waste and tissue. Non-formaldehyde formula.
MK4532 32 fl. oz. 12/cs



Liquid Rollers[®] Trailer Bunk Boards Lubricant
Makes the loading and unloading of boats easy. Dramatically reduces friction to make bunk boards as slick as rollers. Long lasting, non-greasy, non-staining formula. Repels road dirt and grime.
MK6810 10 oz. 12/cs

▲ This product is very flammable. Do not apply while equipment is energized.



Minute Mend[™] Epoxy Putty
Use for patching or repairing wood, metal, fiberglass and plastic. Bonds to wet or dry surfaces, even under water. Ready to use in less than one minute. Can be tapped, sawed, drilled, stained or painted.
14070 4 oz. 24/cs
14071 2 oz. 40/cs

*Plexiglas[®] is a registered trademark of Arkema France. **Lexan[®] is a registered trademark of SABIC Innovative Plastics. ***Sunbrella[®] is a registered trademark of Glen Raven, Inc. ****Sharkskin[®] is a registered trademark of Westland Industries Inc.



Maxi Wax™ One Step Cleaner Wax

Cleans, protects and shines fiberglass and metals. High gloss formula. Provides long lasting protection against weather, salt, fading, chalking and oxidation. Contains ultra-violet inhibitors to combat the harmful effects of the sun.

MK2000 16 fl. oz. 12/cs
MK2001 32 fl. oz. 12/cs
MK20012 1 gallon 4/cs



TREWAX® Four Seasons Boat Wax

Contains Carnauba, the world's hardest natural wax. Leaves a long-lasting, brilliant finish. Designed specifically for marine finishes. Use on fiberglass, painted surfaces, aluminum, chrome, stainless steel.

MK66 12 oz. 12/cs



Marine Cleaner Wax

High-tech cream wax with three polishing agents to clean, remove oxidation and polish fiberglass. Restores surface to a glass-like finish. Contains dual band, full spectrum UV inhibitors to protect against dulling and fading. Buffs to a high gloss shine. Apply by hand or electric buffer.

MK8216 15.9 oz. 12/cs



Highlight™ Spray Wax

Highly concentrated blend of rich waxes. Instantly gives a high-gloss hand-rubbed look. Protects against sun, salt and weathering. Waxes and polishes fiberglass, stainless steel, chrome and brass.

MK2618 18 oz. 12/cs



Moisture Absorber

Dries air in cabins, lockers, bathrooms, closets, basements and other enclosed areas.

Super dry concentrated pellet formula absorbs up to 50% more moisture than flake formulas. Package includes protective web lid.

MK6912 12 oz. 12/cs



Moisture Control Bag

Absorbs dampness that leads to rust and musty odors. Soaks up moisture from the air like a sponge. Does not drip. Great for lockers, head, galley, bilge, cabin and rope storage. Also great for RV, home and apartment use. Reusable.

MK7112 12 oz. 12/cs



insect control



Bee Blast® with Residual Wasp & Hornet Killer

Instantly saturates insects and their nests with a 22-foot jet blast. Knocks down and kills on contact. Now with residual action that kills wasps and hornets returning to the nest.

14009 14 oz. 12/cs



Wasp & Hornet Killer Plus™ Insecticide

Fast acting, high strength insecticide kills wasps, hornets, bees and other stinging insects on contact. Ergonomic trigger provides control. Kills on contact from 20 feet away. Plastic safe formula.

14010 14 oz. 12/cs

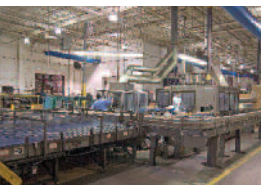


Insect Repellent

Double strength formula repels insects up to twice as long as common consumer products. Helps guard against contracting Lyme Disease when sprayed on exposed skin and clothing.

14011 6 oz. 12/cs





CRC Industries, Inc. • 885 Louis Drive • Warminster, PA 18974

Customer Service: 800-272-8963 • Fax: 800-272-4560

Technical Assistance: 800-521-3168 • MSDS Faxback: 215-442-6260

www.crcindustries.com • www.crcbrakleen.com

www.youtube.com/crcauto • www.facebook.com/crcauto

